



## STANDARD EXECUTIONS

Clamping assembly by means of phosphatised steel class 8.8 (GN 706.3-ST) or AISI 304 stainless steel (GN 706.3-NI) screw, cylindrical head with hexagon socket.

Threaded hole for set screw:

-  $d1 = 20 \div 36$  pass-through

-  $d1 \geq 42$  blind

- **GN 706.3-ST**: sintered black-oxide steel.

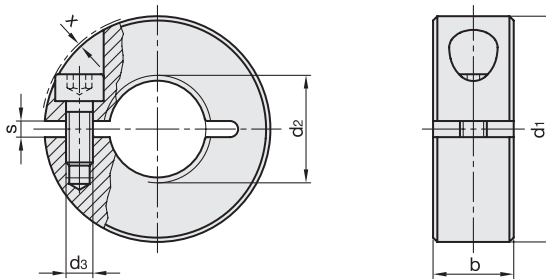
- **GN 706.3-NI**: AISI 316LHC sintered stainless steel.

## FEATURES AND APPLICATIONS

These set collars are used not only on threaded shafts 6g tolerance, as end stops, but also for fixing other components, as end limit switches.

After clamping, the thread of the set collar may no longer be in stable-tolerance (6H).

The clamping screw d3 may be replaced by clamping kit GN 311 (see page -).



## GN 706.3-ST

Code	Description	d1	d2	d3	b	s	x*	⚖
GN.36813	GN 706.3-20-M8-ST	20	M8	M3	9	2.1	1	20
GN.36815	GN 706.3-22-M10-ST	22	M10	M3	9	2.1	0.8	14
GN.36817	GN 706.3-26-M12-ST	26	M12	M4	11	2.1	1.6	30
GN.36819	GN 706.3-32-M16-ST	32	M16	M4	11	2.1	0.7	42
GN.36823	GN 706.3-42-M20-ST	42	M20	M5	15	3	0.6	100
GN.36814	GN 706.3-20-M8x1-ST	20	M8x1	M3	9	2.1	1	20
GN.36816	GN 706.3-22-M10x1-ST	22	M10x1	M3	9	2.1	0.8	19
GN.36818	GN 706.3-26-M12x1.5-ST	26	M12x1.5	M4	11	2.1	1.6	40
GN.36820	GN 706.3-32-M16x1.5-ST	32	M16x1.5	M4	11	2.1	0.7	43
GN.36824	GN 706.3-42-M20x1.5-ST	42	M20x1.5	M5	15	3	0.6	100
GN.36825	GN 706.3-48-M24x1.5-ST	48	M24x1.5	M5	15	3	0	134
GN.36826	GN 706.3-55-M30x1.5-ST	55	M30x1.5	M6	15	3	4	165

## GN 706.3-NI



Code	Description	d1	d2	d3	b	s	x*	⚖
GN.36827	GN 706.3-20-M8-NI	20	M8	M3	9	2.1	1	20
GN.36829	GN 706.3-22-M10-NI	22	M10	M3	9	2.1	0.8	25
GN.36833	GN 706.3-26-M12-NI	26	M12	M4	11	2.1	1.6	30
GN.36835	GN 706.3-32-M16-NI	32	M16	M4	11	2.1	0.7	42
GN.36837	GN 706.3-42-M20-NI	42	M20	M5	15	3	0.6	100
GN.36828	GN 706.3-20-M8X1-NI	20	M8x1	M3	9	2.1	1	20
GN.36830	GN 706.3-22-M10X1-NI	22	M10x1	M3	9	2.1	0.8	27
GN.36834	GN 706.3-26-M12X1.5-NI	26	M12x1.5	M4	11	2.1	1.6	40
GN.36836	GN 706.3-32-M16X1.5-NI	32	M16x1.5	M4	11	2.1	0.7	43
GN.36838	GN 706.3-42-M20X1.5-NI	42	M20x1.5	M5	15	3	0.6	100
GN.36839	GN 706.3-48-M24X1.5-NI	48	M24x1.5	M5	15	3	0	134
GN.36840	GN 706.3-55-M30X1.5-NI	55	M30x1.5	M6	15	3	0.4	165